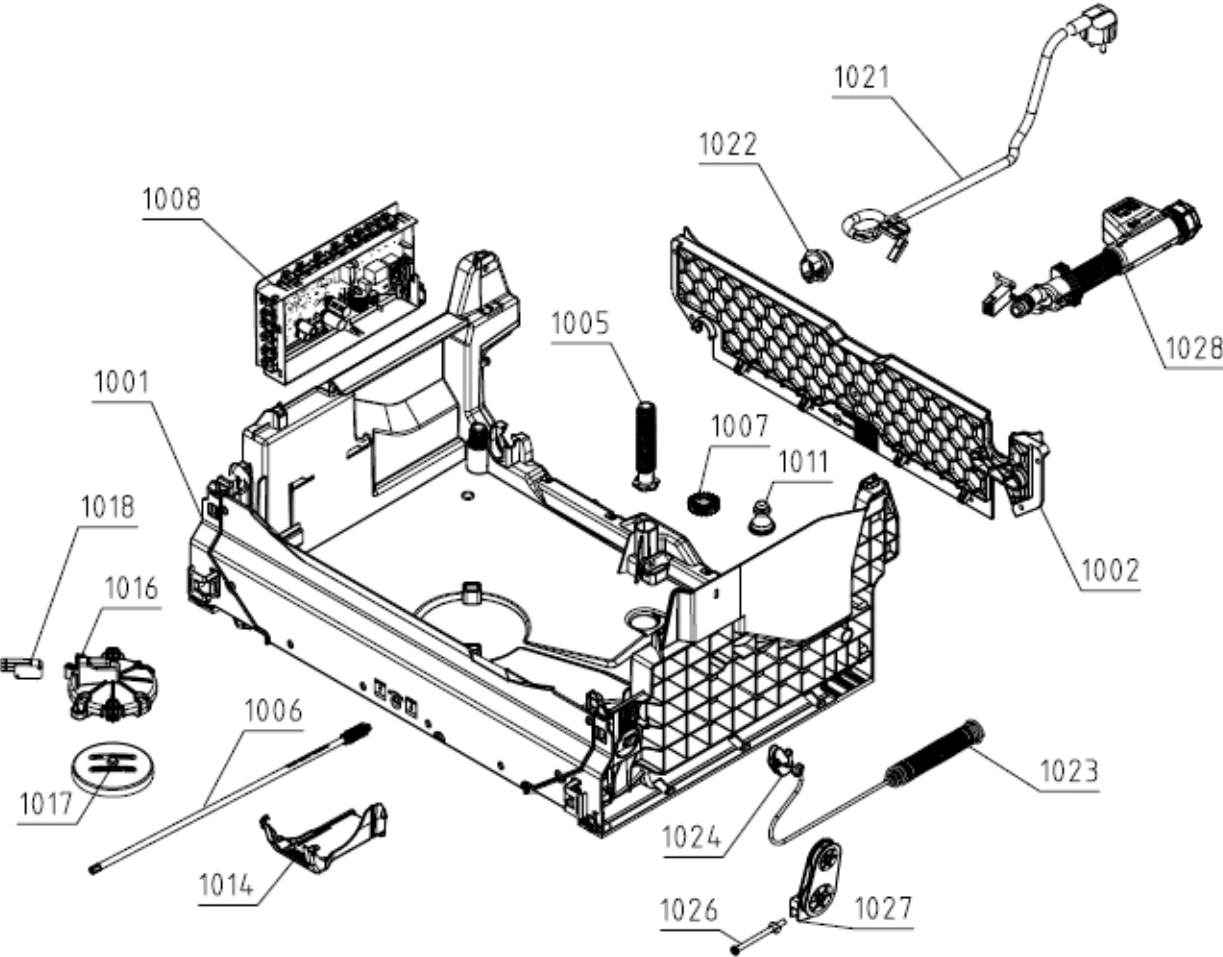


LISTE DES PIÈCES DÉTACHÉES

| | | | |
|----------------------|----------|------------|------------|
| Type (Modèle Usine) | DW30.1 | Marque | HISENSE |
| Modèle | HV661C60 | Version | 14.04.2022 |
| ID Produit / ART. No | 737574 | N° d'Index | 05 |

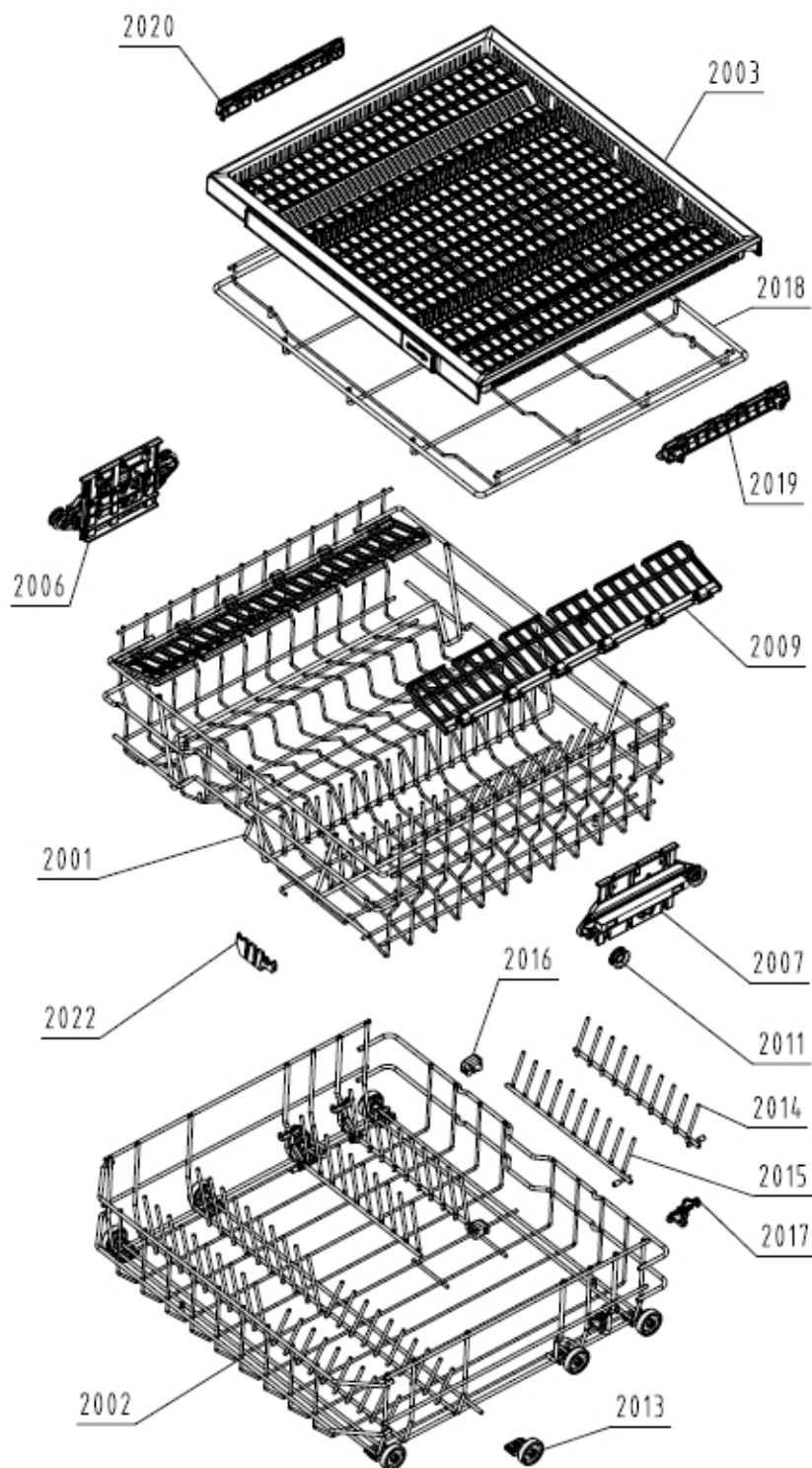
160644



| Position | Identifiant | Désignation | Quantité | Validité | Extra ID |
|----------|-------------|-----------------------------------|----------|----------|----------|
| 1001 | 812032 | BASE | 1 | | |
| 1001A | 827396 | SCREW BASE | 2 | | |
| 1002 | 859825 | BASE COVER BACK | 1 | | |
| 1002A | 534737 | SCREW PT K 0X10-A2K-WN5451-TORX20 | 8 | | |
| 1005 | 512038 | ADJUSTABLE FOOT | 3 | | |
| 1006 | 512031 | WORM | 1 | | |

| Position | Identifiant | Désignation | Quantité | Validité | Extra ID |
|----------|-------------|------------------------------------|----------|----------|----------|
| 1007 | 512082 | GEAR | 1 | | |
| 1008 | 859454 | CONTROL UNIT E | 1 | | |
| 1011 | 576727 | CIRCULATION PUMP DAMPER | 1 | | |
| 1014 | 512040 | CABLE PROTECTOR | 1 | | |
| 1016 | 512052 | FLOAT BRACKET | 1 | | |
| 1017 | 512053 | FLOAT | 1 | | |
| 1018 | 795705 | FLOAT MICROSWITCH | 1 | | |
| 1021 | 708425 | SUPPLY CORD | 1 | | |
| 1022 | 667400 | RUBBER SEAL | 1 | | |
| 1022A | 667401 | CLIP FOR INITIATION SLEEVE | 1 | | |
| 1023 | 640309 | KIT DOOR SPRING FI/BI | 2 | | |
| 1024 | 512237 | DOOR HINGE BRAIDED LINE POP OUT | 2 | | |
| 1026 | 545950 | SET SCREW/NUT FOR ADJ. DOOR SPRING | 1 | | |
| 1027 | 512081 | SPRING STRETCHER GUIDE | 2 | | |
| 1028 | 699820 | INLET HOSE 230V | 1 | | |

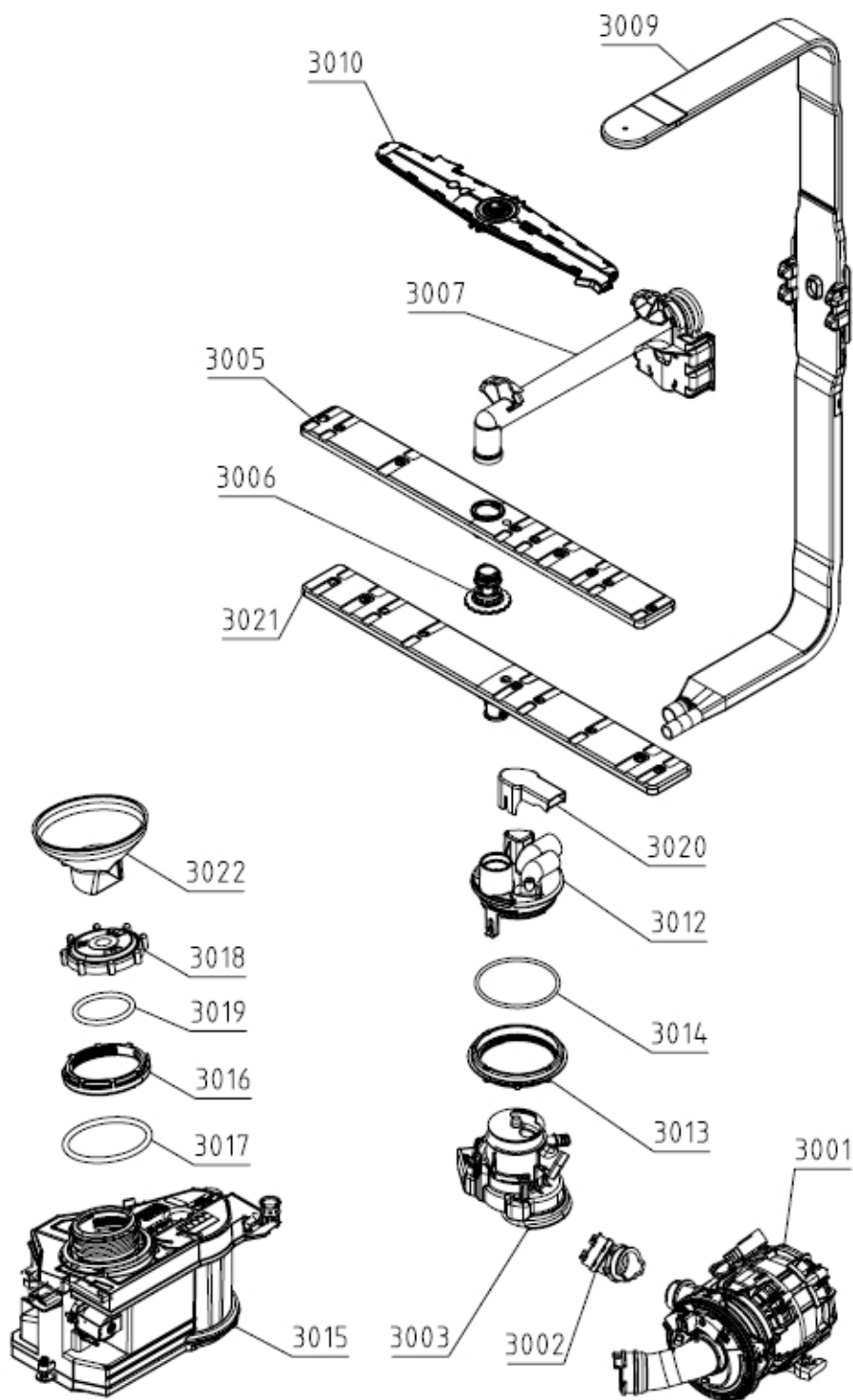
161669



| Position | Identifiant | Désignation | Quantité | Validité | Extra ID |
|----------|-------------|------------------------------------|----------|----------|----------|
| 2001 | 838145 | UPPER BASKET ASSY | 1 | | |
| 2002 | 625016 | SET LOWER BASKET MID+ 778 ASSY | 1 | | |
| 2003 | 602156 | TOP BASKET NO LOGO 5502-B | 1 | | |
| 2006 | 517325 | BRACKET 3-LEVEL CLICK CLACK L ASSY | 1 | | |
| 2007 | 517326 | BRACKET 3-LEVEL CLICK CLACK R ASSY | 1 | | |
| 2009 | 819529 | CUP SHELF | 2 | | |

| Position | Identifiant | Désignation | Quantité | Validité | Extra ID |
|----------|-------------|-------------------------------------|----------|----------|----------|
| 2011 | 588496 | BASKET WHEEL UPP.7024 | 8 | | |
| 2013 | 700391 | LOWER BASKET WHEEL | 8 | | |
| 2014 | 602079 | ADJUST. PLATE RACK R LOW BASKET 778 | 2 | | |
| 2015 | 602080 | ADJUST.PLATE RACK L LOW BASKET 778 | 2 | | |
| 2016 | 484431 | PLATE-RACK HOLDER SHORT 5502-B | 2 | | |
| 2017 | 662537 | PLATE-RACK HOLDER ADJUSTMENT | 4 | | |
| 2018 | 602088 | CARRIER TOP BASKET 778 | 1 | | |
| 2019 | 517342 | SLIDE BEARING TOP BASKET R 7024 | 1 | | |
| 2020 | 517343 | SLIDE BEARING TOP BASKET L 7024 | 1 | | |
| 2022 | 662539 | KNIFE RACK | 1 | | |

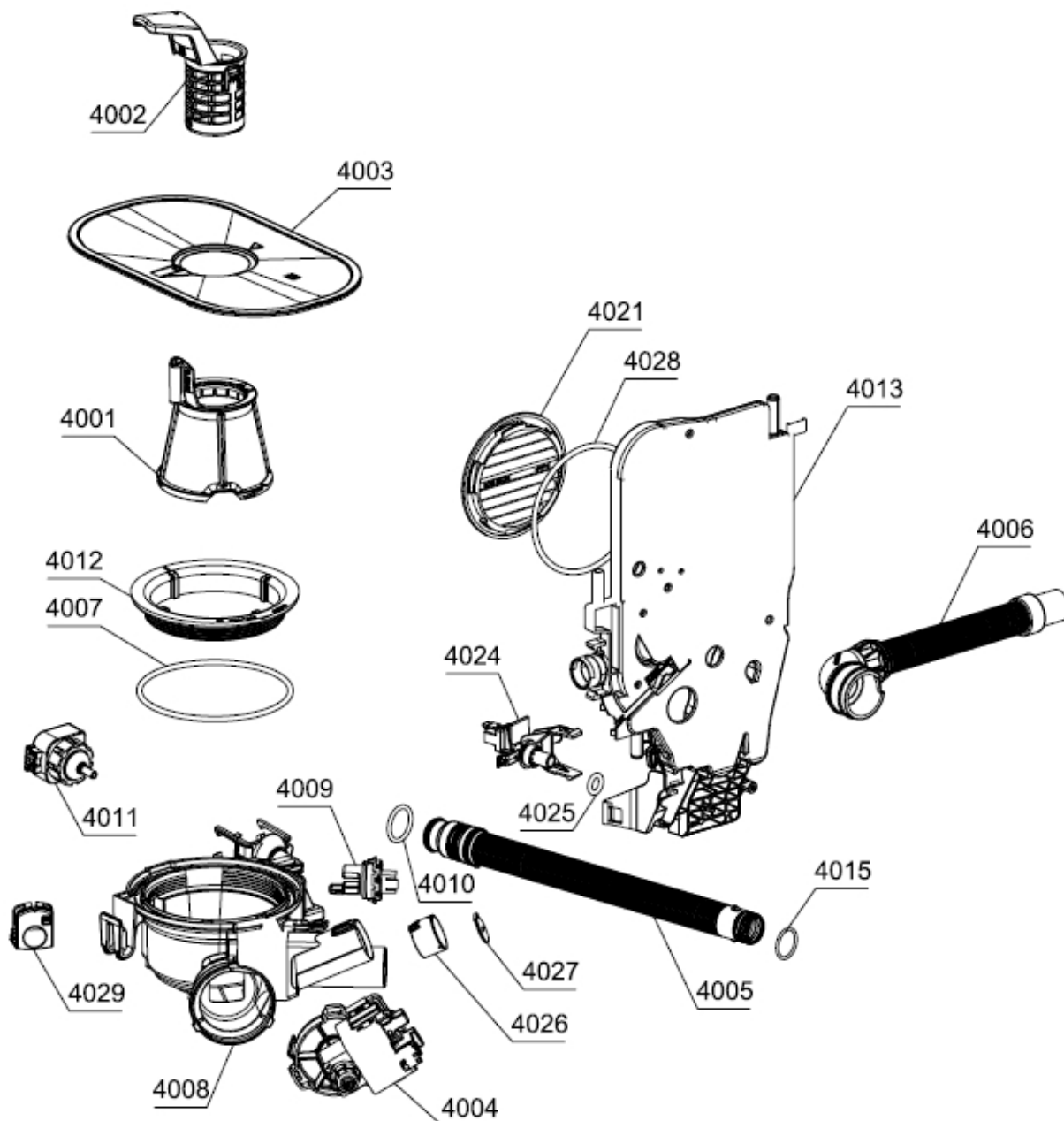
162639



| Position | Identifiant | Désignation | Quantité | Validité | Extra ID |
|----------|-------------|---------------------------------------|----------|----------|----------|
| 3001 | 718007 | CIRC.PUMP BLDC | 1 | | |
| 3001A | 537874 | CLAMP - WIRE D 38 | 1 | | |
| 3002 | 879218 | HOSE SET/CLAMP FOR CIRC.PUMP | 1 | | |
| 3003 | 820109 | DIVERTER VALVE 3-POS | 1 | | |
| 3005 | 515329 | SPRAY ARM UPP ASSY | 1 | | |
| 3006 | 560801 | UPP. BASKET SPRAY ARM BEARING DW 7024 | 1 | | |

| Position | Identifiant | Désignation | Quantité | Validité | Extra ID |
|----------|-------------|-------------------------------|----------|----------|----------|
| 3007 | 829504 | SPRAYER TUBE UPPER BASKET | 1 | | |
| 3009 | 824852 | SPRAYER TUBE ADJ.UPPER BASKET | 1 | | |
| 3010 | 824057 | UPPER BASKET SPRAY ARM ASSY | 1 | | |
| 3012 | 822468 | SPRAY TOWER | 1 | | |
| 3013 | 700323 | RING | 1 | | |
| 3014 | 700437 | GASKET | 1 | | |
| 3015 | 514532 | WATER SOFTENER UNIT 230V | 1 | | |
| 3016 | 514534 | WATER SOFTENER UNIT LOCK RING | 1 | | |
| 3017 | 514535 | O-RING 70X5 | 1 | | |
| 3018 | 514536 | WATER SOFTENER UNIT COVER | 1 | | |
| 3019 | 514537 | O-RING 47X4,5 | 1 | | |
| 3020 | 698061 | DISCHARGE COVER | 1 | | |
| 3021 | 515308 | SPRAY ARM LOW ASSY | 1 | | |
| 3022 | 561399 | SALT FUNNEL DW30 5502-B | 1 | | |

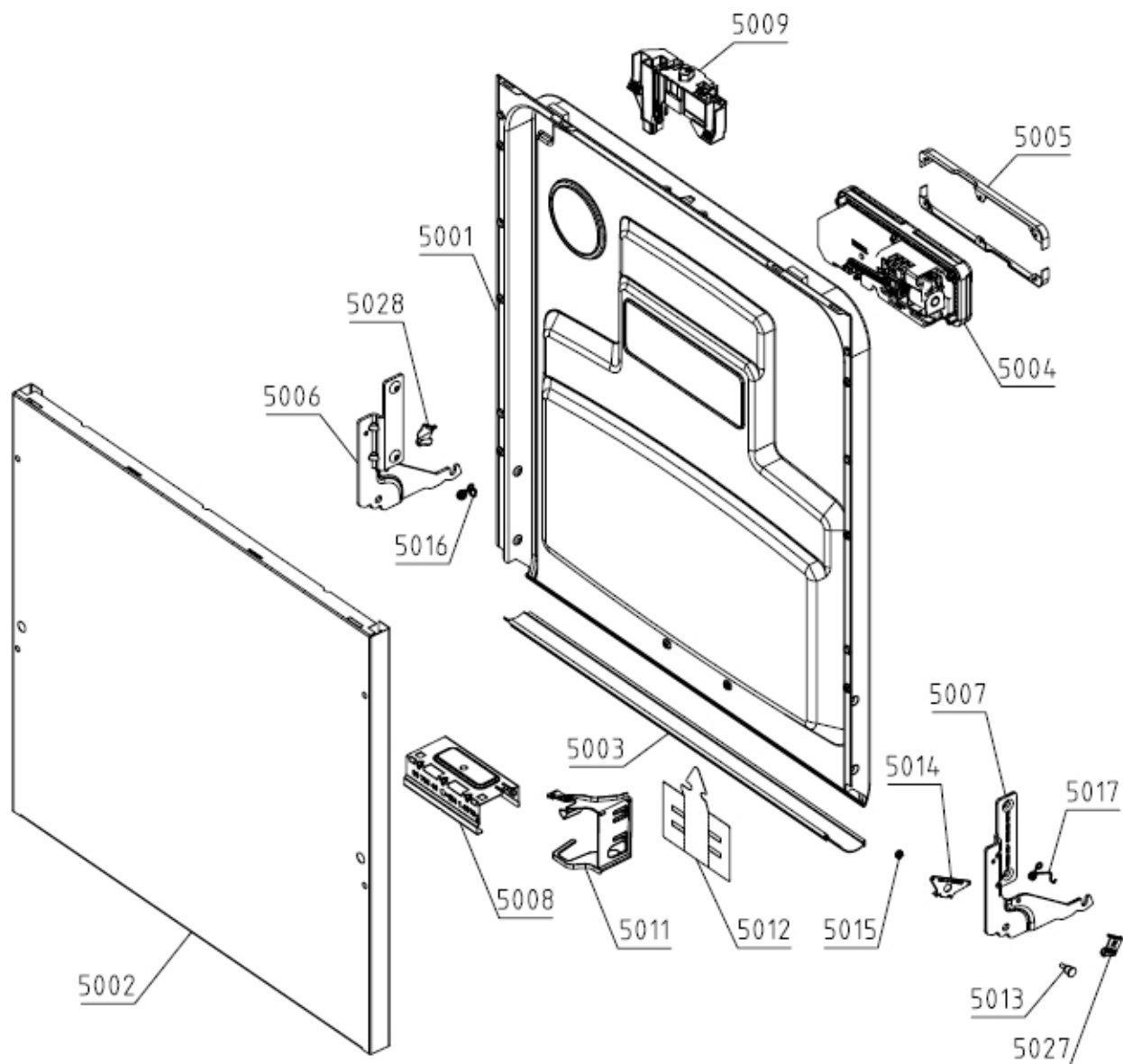
163631



| Position | Identifiant | Désignation | Quantité | Validité | Extra ID |
|----------|-------------|-------------------------------------|----------|----------|----------|
| 4001 | 838218 | FILTER SET | 1 | | |
| 4002 | 819539 | STRAINER | 1 | | |
| 4003 | 857521 | STRAINER | 1 | | |
| 4004 | 581830 | DRAIN PUMP | 1 | | |
| 4005 | 825235 | DISCHARGE HOSE ASSY | 1 | | |
| 4006 | 545951 | SET HOSE/CLAMP FOR SIPHON DISCHARGE | 1 | | |
| 4007 | 800466 | O-RING | 1 | | |
| 4008 | 830852 | SUMP | 1 | | |
| 4009 | 508116 | TURBIDITY,THERMISTOR SENSOR UL4 | 1 | | |
| 4010 | 512673 | O-RING 23X3 N70 | 1 | | |
| 4011 | 856275 | PRESSURE SENSOR ASSY | 1 | | |

| Position | Identifiant | Désignation | Quantité | Validité | Extra ID |
|----------|-------------|----------------------------------------|----------|----------|----------|
| 4012 | 700325 | RING | 1 | | |
| 4013 | 714341 | SET AIR BREAK,O-RING | 1 | | |
| 4015 | 559007 | O-RING 20,5X2 | 2 | | |
| 4021 | 549272 | AIR BREAK LOCK RING ANTI TILT ELBI-BI. | 1 | | |
| 4024 | 512672 | AQUA STOP ADAPTER | 1 | | |
| 4025 | 517668 | O-RING 10X3,5 | 1 | | |
| 4026 | 513850 | NON-RETURN VALVE HOLDER | 1 | | |
| 4027 | 513851 | NON-RETURN VALVE | 1 | | |
| 4028 | 800507 | O-RING | 1 | | |
| 4029 | 512051 | BOTTOM SUMP PLUG 1070-Y | 1 | | |

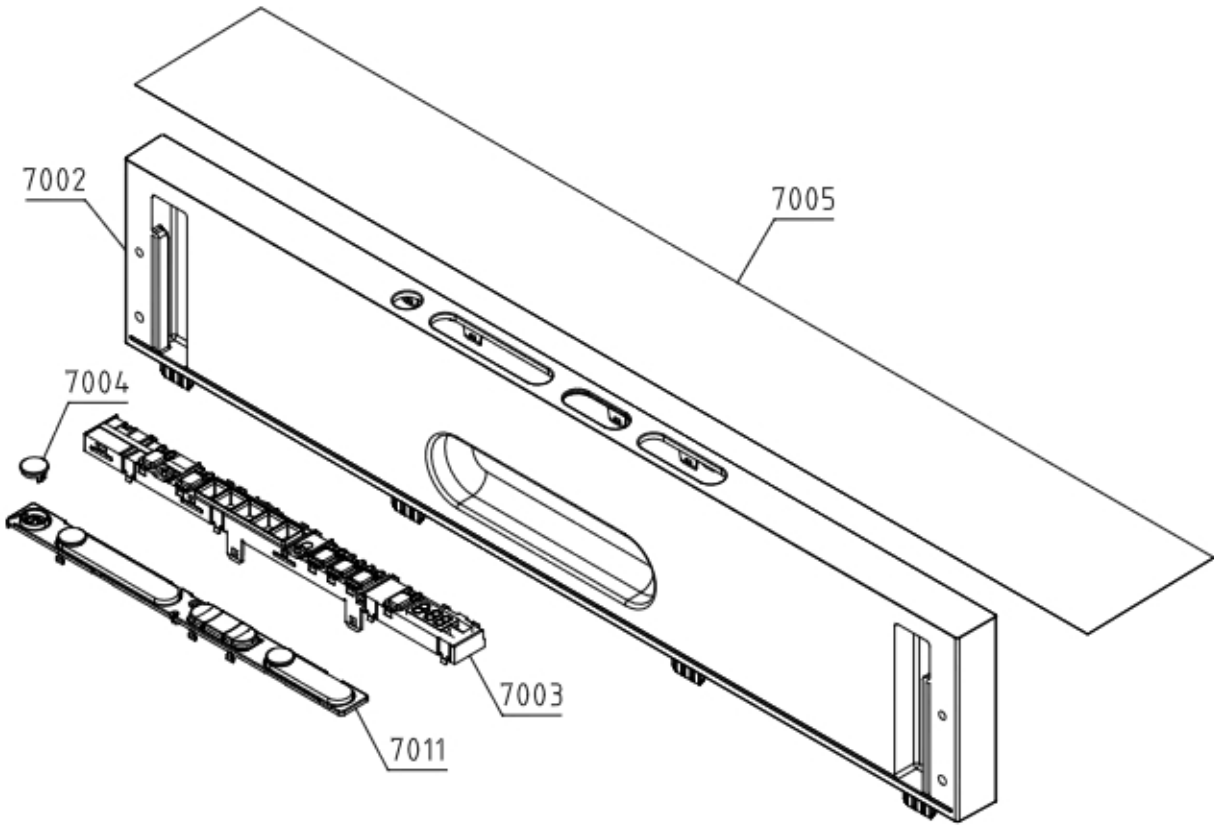
164641



| Position | Identifiant | Désignation | Quantité | Validité | Extra ID |
|----------|-------------|--------------------------------------|----------|----------|----------|
| 5001 | 822461 | INNER DOOR XL | 1 | | |
| 5001A | 785608 | SCREW | 4 | | |
| 5001B | 200617 | SCREW PT KB40X10 WN1442 RFS | 3 | | |
| 5002 | 823794 | DOOR OUTER FI/BI | 1 | | |
| 5003 | 426743 | DOOR GASKET | 1 | | |
| 5004 | 700203 | SOAP DISPENSER | 1 | | |
| 5005 | 700559 | SOAP DISPENSER HOLDER DW COMBI AWECO | 2 | | |
| 5005A | 200621 | SCREW PTK 40X14 WN1452 FZB T2 | 12 | | |
| 5006 | 877912 | HINGE RIGHT | 1 | | |
| 5006A | 856712 | HINGE LOCK | 1 | | |
| 5007 | 877911 | HINGE LEFT | 1 | | |
| 5007A | 872525 | SCREW TEČAJA | 4 | | |
| 5009 | 556209 | DOOR LOCK POP-OUT F.E-CONTROL ASSY | 1 | | |

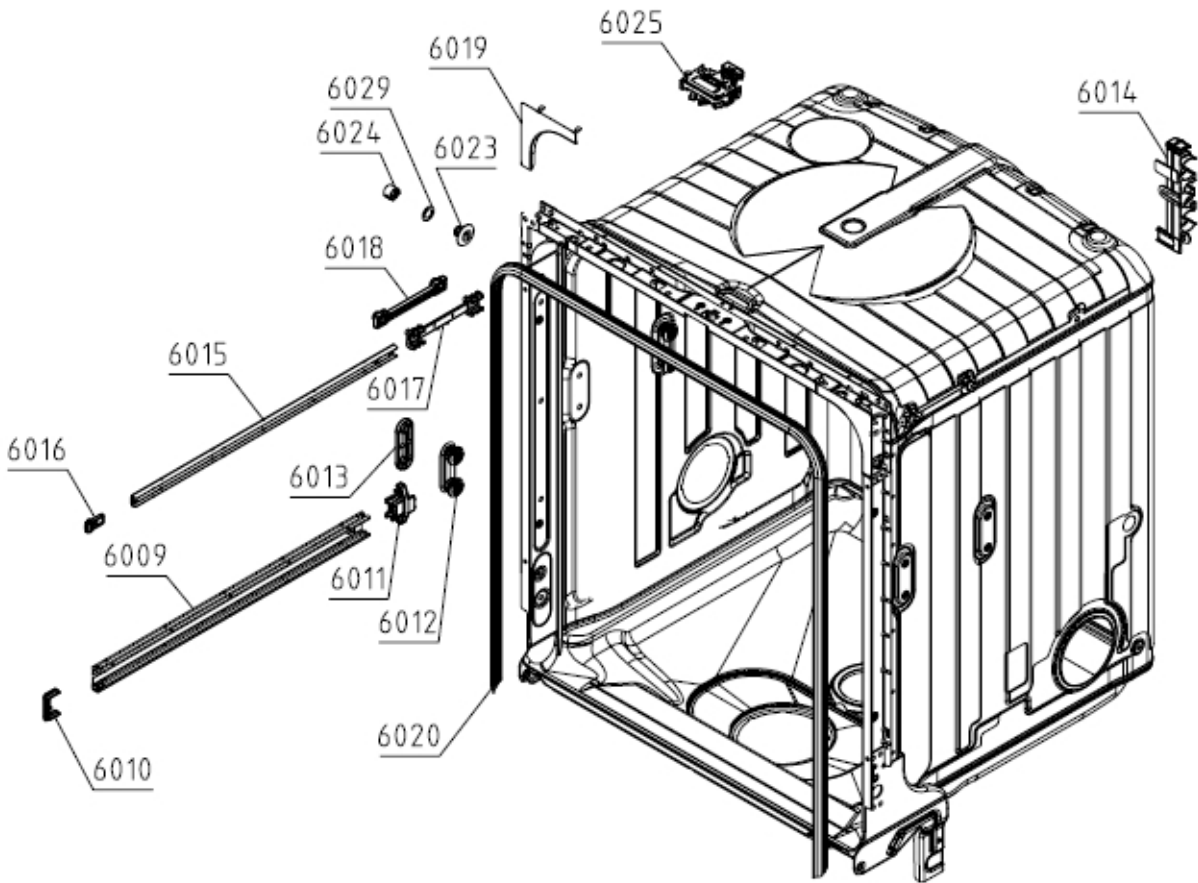
| Position | Identifiant | Désignation | Quantité | Validité | Extra ID |
|----------|-------------|------------------------------------------|----------|----------|----------|
| 5009A | 570424 | SCREW PTK 40X13 WN5454 | 4 | | |
| 5011 | 449948 | INTERIOR DOOR HARNESS HOLDER DW UL4 9005 | 1 | | |
| 5012 | 700409 | COVER | 1 | | |
| 5013 | 700312 | HINGE SCREW | 1 | | |
| 5015 | 587141 | NUT M4 FLANGE SELF-LOCKING | 1 | | |
| 5016 | 663388 | SPRING DOOR POP OUT DW30 L | 1 | | |
| 5016A | 353700 | SCREW SF 4X11-A3K-TORX20 EJOT | 2 | | |
| 5017 | 663389 | SPRING DOOR POP OUT DW30 R | 1 | | |
| 5027 | 580180 | SLIDE BEARING SPRING DOOR POP OUT R | 1 | | |
| 5028 | 580181 | SLIDE BEARING SPRING DOOR POP OUT L | 1 | | |

165647



| Position | Identifiant | Désignation | Quantité | Validité | Extra ID |
|----------|-------------|-----------------------|----------|----------|----------|
| 7002 | 825412 | CONTROL PANEL | 1 | | |
| 7003 | 804922 | USER INTERFACE DW30.1 | 1 | | |
| 7004 | 846757 | KNOBS SET | 1 | | |
| 7005 | 831108 | PROTECTIVE FOIL | 1 | | |
| 7011 | 823415 | LENS | 1 | | |

166091



| Position | Identifiant | Désignation | Quantité | Validité | Extra ID |
|----------|-------------|--------------------------------|----------|----------|----------|
| 6009 | 797102 | GUIDE | 2 | | |
| 6010 | 700430 | RAIL BLOCK | 2 | | |
| 6011 | 512228 | GUIDE RAIL STOP REAR | 2 | | |
| 6012 | 884679 | BASKET HOLDER WITH WHEELS ASSY | 4 | | |
| 6013 | 512194 | BASKET HOLDER FIXING PLATE | 4 | | |
| 6013A | 512226 | SCREW PTK 40X22 WN1452 FZB T20 | 8 | | |
| 6015 | 861854 | CUTLERY BASKET GUIDE | 2 | | |
| 6016 | 719882 | STOP TOP BASKET | 4 | | |
| 6017 | 790720 | TOP BASKET RUNNER GUIDE ASSY | 1 | | |
| 6018 | 514361 | FIXING PLATE GUIDE | 2 | | |
| 6019 | 512148 | DECORATIVE ANGULAR PIECE BLANK | 2 | | |
| 6020 | 853708 | TUB GASKET UL | 1 | | |
| 6023 | 871824 | GUIDE PLUG | 2 | | |
| 6024 | 640272 | INSTALLATION PLUG | 2 | | |
| 6025 | 805101 | DOOR LATCH | 1 | | |
| 6029 | 545891 | WASHER 12X19X0,8 REINFORCEMENT | 2 | | |
| 9999 | 879264 | ATTACHMENT BG ASSY | 1 | | |

168001

SET KABELSKI

WIRING HARNESS

KABELBAUM

CABLAGE ASSEMBLE

| Position | Identifiant | Désignation | Quantité | Validité | Extra ID |
|----------|-------------|-----------------------------------------|----------|----------|----------|
| 8005 | 867995 | WIRING HARNESS HEATER | 1 | | |
| 8006 | 867988 | WIRING HARNESS GCUX7-SALT SENSOR | 1 | | |
| 8007 | 867991 | WIRING HARNESS GCUX11-SALT VALVE | 1 | | |
| 8008 | 867989 | WIRING HARN.GCUX8-FLOW,PRES.,TURB.NTC | 1 | | |
| 8009 | 867996 | WIRING HARNESS GCUX10-INLET DRAIN FLOAT | 1 | | |
| 8010 | 867992 | WIRING HARNESS GCUX12-DIVERTER | 1 | | |
| 8011 | 868005 | WIRING HARNESS GCUX17-BLDC PUMP | 1 | | |
| 8017 | 868020 | WIRING HARNESS-INNER DOOR ASSY | 1 | | |
| 8018 | 867987 | WIRING HARNESS GCUX3-SYSTEM POP-OUT | 1 | | |